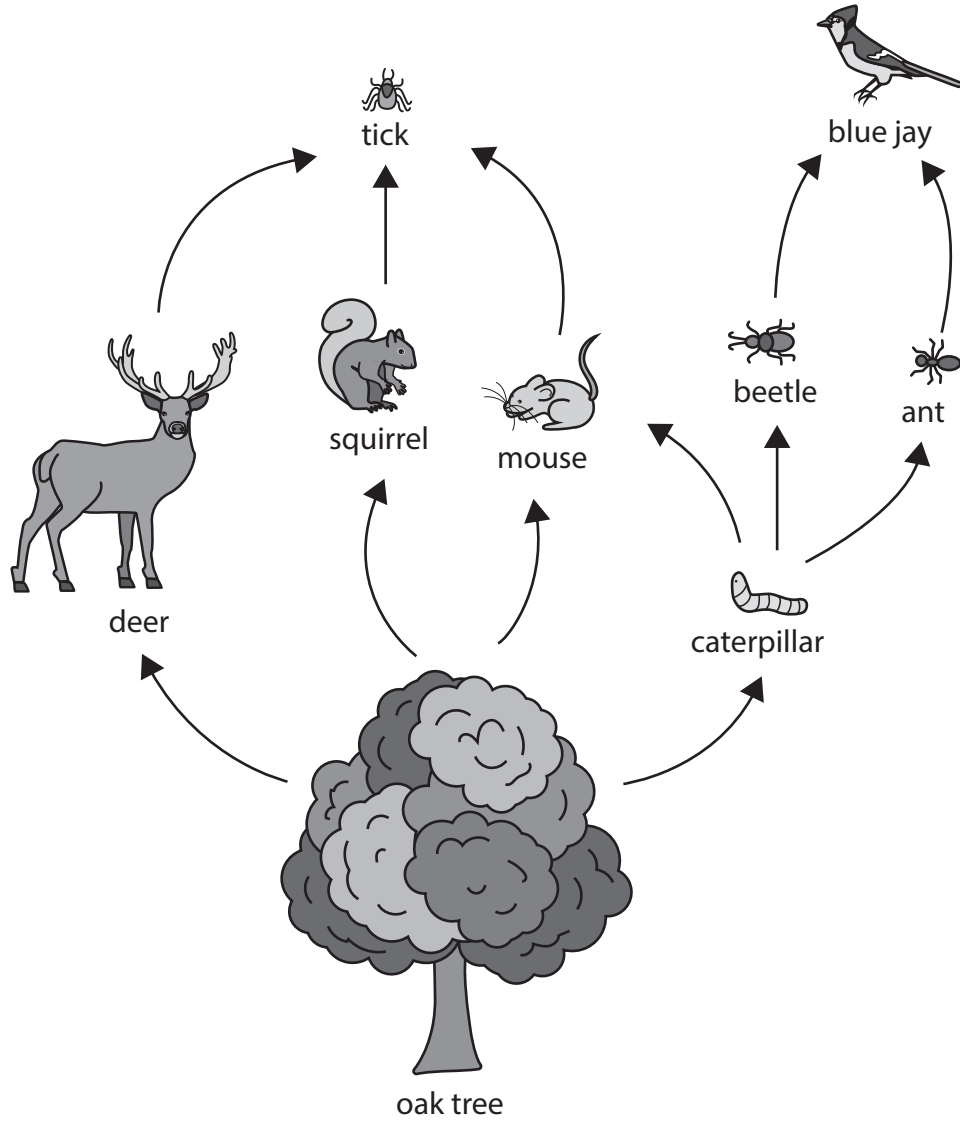


Answer ALL questions.

Some questions must be answered with a cross . If you change your mind about an answer, put a line through the box and then mark your new answer with a cross .

1 The diagram shows part of a food web from an oak woodland.



(a) (i) Which is the producer in this food web?

(1)

- A beetle
- B deer
- C oak tree
- D tick

(ii) Draw a food chain, from this web, that includes the mouse and contains four trophic levels.

(2)

(iii) Which one of these organisms is in two different trophic levels in this food web?

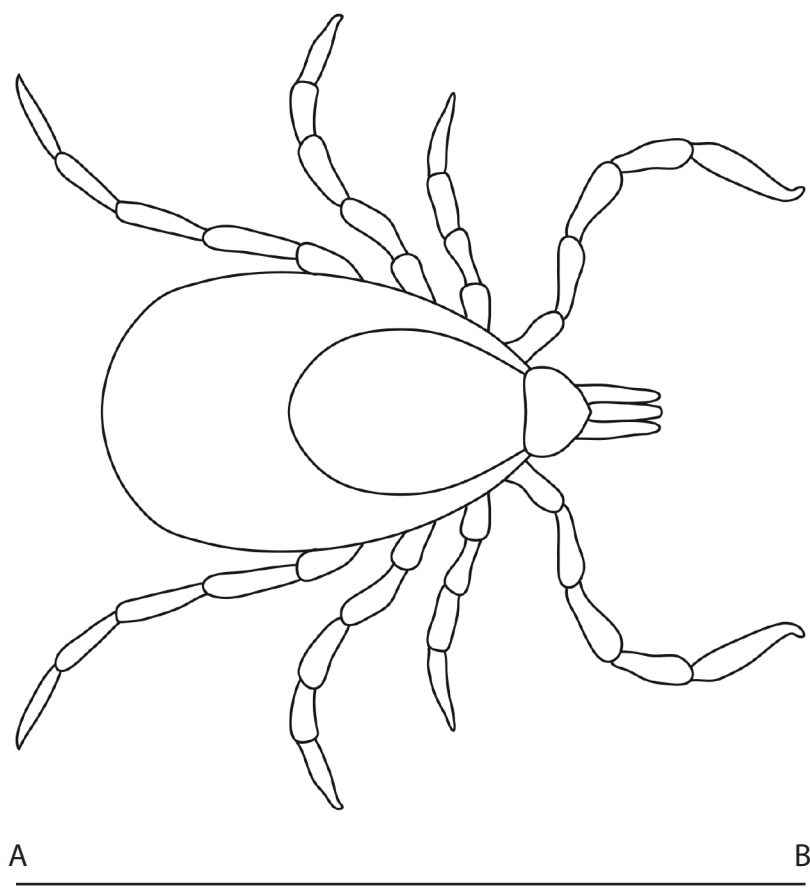
(1)

- A ant
- B blue jay
- C caterpillar
- D mouse



(b) A tick is a small spider-like organism that bites and then takes in blood from the mammals as it feeds.

This is a magnified image of a tick.



(Source: © Evgdemidova / Shutterstock)

(i) The actual length of the tick, as shown by line A-B, is 3.5 mm.

Calculate the magnification of the image of the tick.

(2)

magnification = \times



(ii) The tick absorbs substances from the mammal's blood it has taken in.

Give the function of two named substances absorbed by the tick.

(4)

substance 1

.....

.....

.....

.....

.....

.....

substance 2

.....

.....

.....

.....

.....

.....

(iii) Ticks can pass diseases between organisms.

Suggest how ticks can pass diseases from one organism to another.

(2)

.....

.....

.....

.....

.....

.....

(Total for Question 1 = 12 marks)

DO NOT WRITE IN THIS AREA

DO NOT WRITE IN THIS AREA

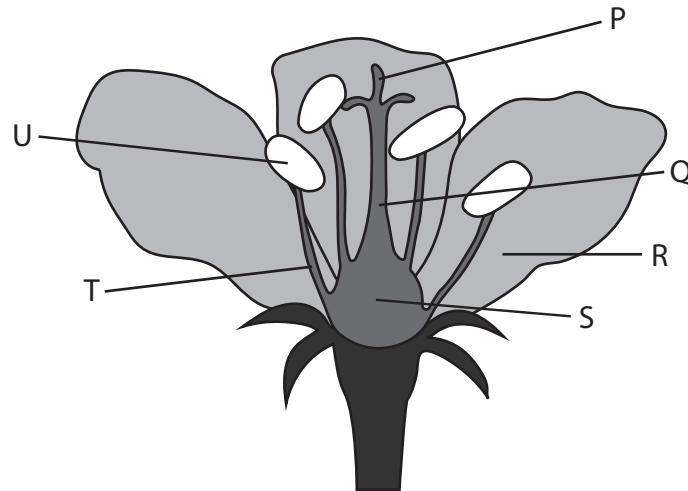
DO NOT WRITE IN THIS AREA

smartstudycampus.com



P 7 5 8 1 3 A 0 5 3 2

2 The diagram shows a flower with some structures labelled.



(a) (i) Which structure is the style?

(1)

- A** P
- B** Q
- C** S
- D** T

(ii) Which structure releases pollen?

(1)

- A** P
- B** R
- C** T
- D** U

(iii) On which structure do the pollen grains germinate?

(1)

- A** P
- B** R
- C** S
- D** U



(b) This flower is insect-pollinated.

Describe how structures P, R and T would be different in a wind-pollinated flower.

(3)

P

R

T

(c) Flowering plants can reproduce asexually.

(i) Give an example of a natural method of asexual reproduction in plants.

(1)

(ii) Give an example of an artificial method of asexual reproduction in plants.

(1)

(d) Give three differences between asexual and sexual reproduction.

(3)

1

2

3



3 The passage describes the process used to produce yoghurt.

Complete the passage by writing a suitable word or words in each blank space.

(7)

Yoghurt is made by heating to a high temperature.

This heating process is known as

This ensures that bacteria present in the liquid are

The liquid is then cooled to between 40°C and 46°C.

A type of bacteria called is then added.

These bacteria use a sugar called for

..... respiration.

The pH of the yoghurt decreases because this respiration produces a substance called

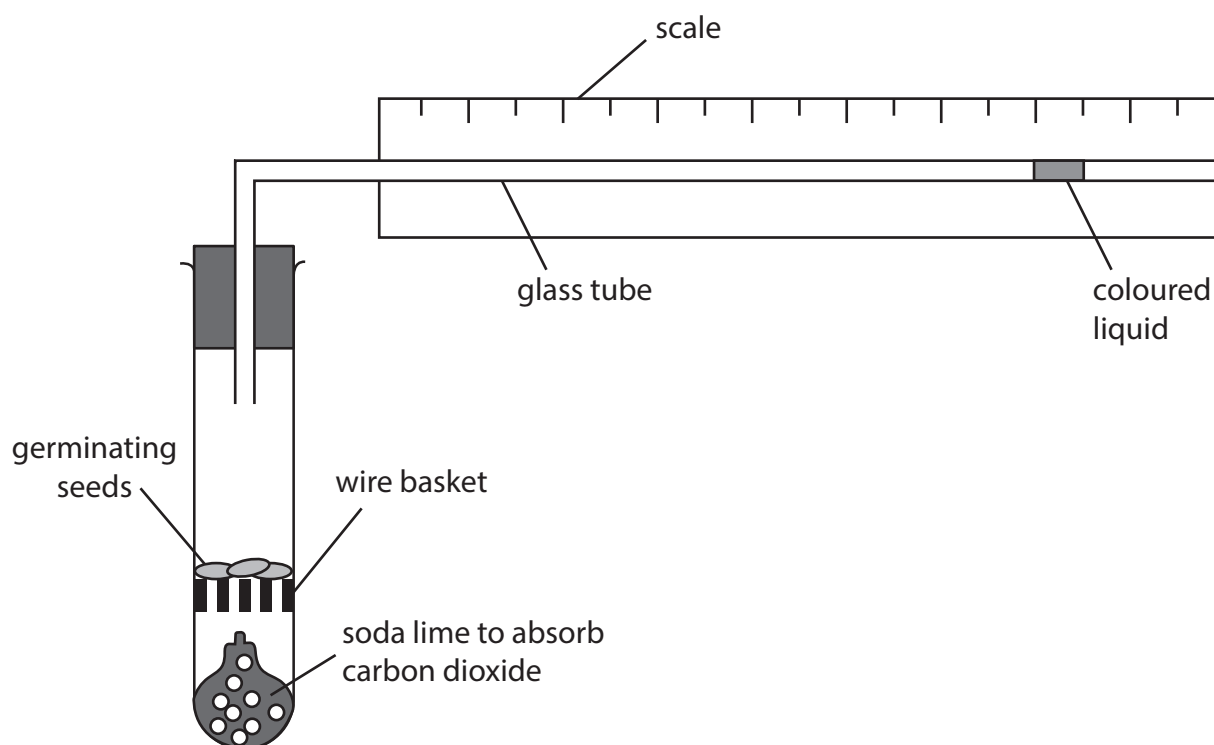
.....

(Total for Question 3 = 7 marks)



- 4 A respirometer is a simple apparatus that can be used to measure the rate of respiration in small organisms.

A student uses the respirometer to investigate the rate of respiration in some germinating seeds.



- (a) Give the balanced chemical symbol equation for aerobic respiration.

(2)

- (b) The student measures the rate of respiration of 10 g of germinating seeds at 20°C.

They then repeat this with another sample of 10 g of germinating seeds at 30°C.

The rate of respiration can be measured by recording the distance, in mm, the bubble of coloured liquid moves on the scale in one minute.

They measure the rate three times at each temperature.

- (i) Explain why carbon dioxide needs to be absorbed by the soda lime when measuring the rate of aerobic respiration.

(2)

.....

.....

.....

.....

.....



DO NOT WRITE IN THIS AREA

DO NOT WRITE IN THIS AREA

DO NOT WRITE IN THIS AREA

smartstudycampus.com

BLANK PAGE



5 (a) Increased release of greenhouse gases are a threat to many ecosystems.

(i) Which of these are greenhouse gases?

(1)

- 1 CFCs
- 2 methane
- 3 oxygen
- 4 water vapour

- A 1 and 2 only
- B 1, 2 and 3 only
- C 1, 2 and 4 only
- D all of them

(ii) Explain what is meant by the term **greenhouse effect**.

(2)

.....

.....

.....

.....

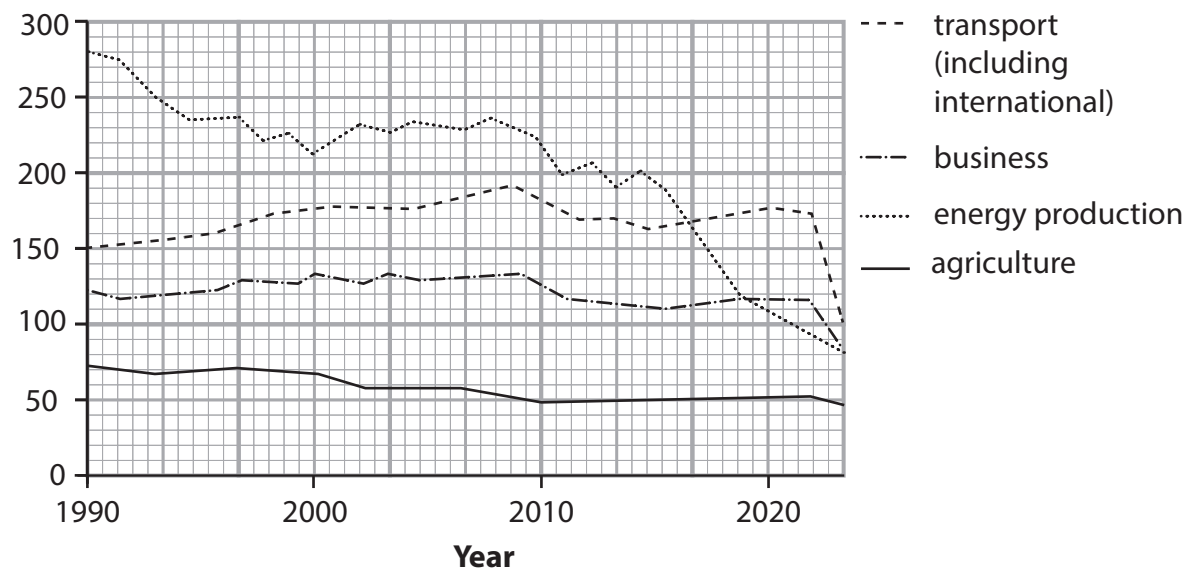
.....

.....



(b) The graph shows the mass of greenhouse gases emitted from four sources in the United Kingdom from 1990 to 2020.

Mass of greenhouse gas in million tonnes



(i) Calculate the percentage of the total greenhouse gases emitted that came from energy production in 2020.

(3)

percentage = %



DO NOT WRITE IN THIS AREA

DO NOT WRITE IN THIS AREA

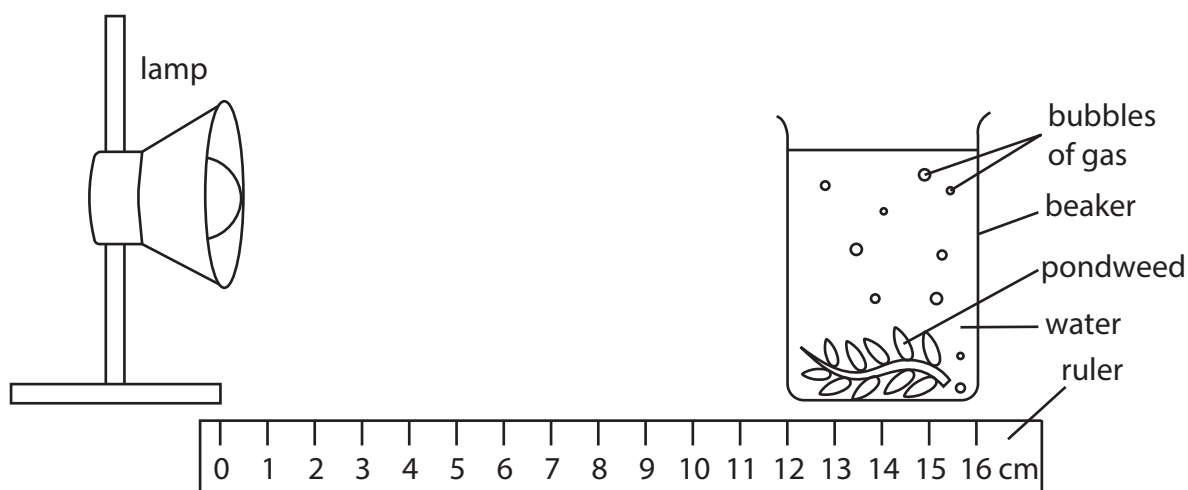
DO NOT WRITE IN THIS AREA

smartstudycampus.com

BLANK PAGE



- 6 A student uses this apparatus to investigate the effect of light intensity on the rate of photosynthesis in pondweed.



This is the student's method.

- put a cut piece of pondweed in a beaker of water
- put a lamp 12 cm from the beaker
- count the number of bubbles of gas released from the cut end of the pondweed in one minute
- repeat this count for two more one-minute periods

The student repeats the method, moving the lamp 2 cm nearer the beaker each time.

- (a) (i) Which gas is released by the plant during photosynthesis?

(1)

- A carbon dioxide
- B oxygen
- C methane
- D nitrogen

- (ii) Which of these is the site of photosynthesis in a plant cell?

(1)

- A chloroplast
- B mitochondrion
- C nucleus
- D ribosome

- (iii) Give one abiotic variable the student should control in this investigation.

(1)



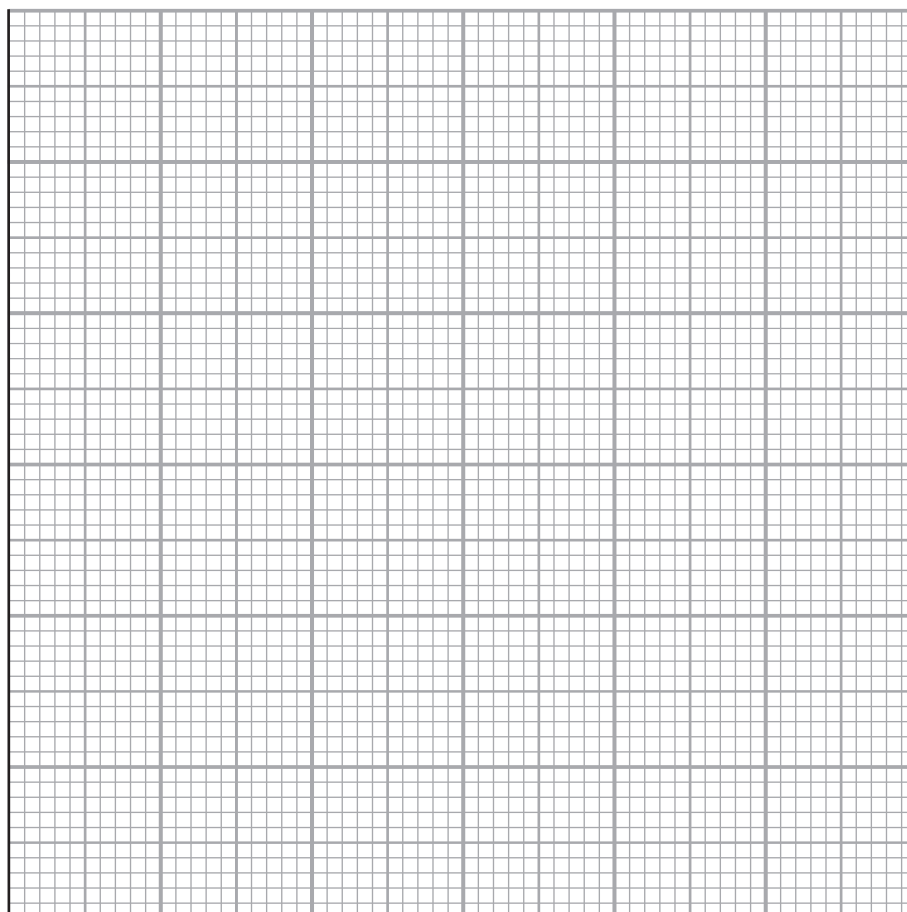
(b) The table shows the student's results

Distance of lamp from beaker in cm	Number of bubbles released per minute			
	count 1	count 2	count 3	mean (average)
2	20	18	20	19
4	16	15	15	15
6	12	14	13	13
8	10	9	8	9
10	8	7	8	8
12	5	6	4	5

- (i) Plot a line graph to show the relationship between the distance of the lamp from the beaker and the mean number of bubbles released.

Use a ruler to join your points with straight lines.

(5)



(ii) Explain the effect of increasing the distance of the lamp from the beaker on the mean number of bubbles released per minute.

(3)

.....

.....

.....

.....

.....

.....

.....

.....

.....

.....

.....

.....

.....

.....

.....

(Total for Question 6 = 11 marks)

DO NOT WRITE IN THIS AREA

DO NOT WRITE IN THIS AREA

DO NOT WRITE IN THIS AREA

smartstudycampus.com



DO NOT WRITE IN THIS AREA

DO NOT WRITE IN THIS AREA

DO NOT WRITE IN THIS AREA

smartstudycampus.com

BLANK PAGE



DO NOT WRITE IN THIS AREA

DO NOT WRITE IN THIS AREA

DO NOT WRITE IN THIS AREA

7 (a) Human blood contains red blood cells and white blood cells.

Give three differences in structure between red blood cells and white blood cells.

(3)

1

.....

.....

2

.....

.....

3

.....

.....

smartstudycampus.com



(b) Scientists collect data from men and women living at different altitudes.

The scientists determine

- the mean mass of haemoglobin in one litre of blood
- the mean number of red blood cells in one litre of blood

The table gives the scientists' results.

Altitude in m	Mean mass of haemoglobin in 1 litre of blood in g		Mean number of red blood cells in 1 litre $\times 10^{12}$		Number of people in sample	
	men	women	men	women	men	women
0 (sea level)	148	138	5.15	4.84	18 453	27 559
1890	152	147	5.37	5.20	2175	3510
2270	151	142	5.18	4.88	2023	2943

(i) The blood volume of a woman living at an altitude of 1890 m is 4.3 litres.

Calculate the total number of red blood cells in this person.

Give your answer in standard form.

(3)

number of red blood cells =

(ii) Calculate the percentage difference in mean mass of haemoglobin in 1 litre of blood in men living at 2270 m compared with men living at sea level.

(2)

percentage difference = %



8 Cystic fibrosis (CF) is a condition that affects the mucus produced in the lungs and in other organs.

The condition is caused by a recessive allele.

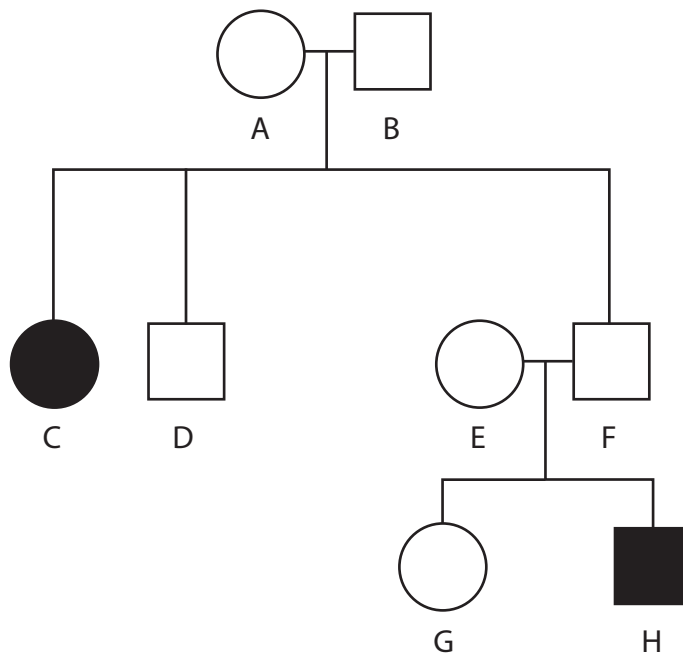
(a) State what is meant by a recessive allele.

(1)

.....
.....
.....

(b) The diagram below shows a family pedigree.

Some people in the family have CF.



Key



female with CF



unaffected female



male with CF



unaffected male

(i) Use the pedigree to determine the genotypes of individuals A, B and C.

(3)

A
B
C



(ii) Individuals E and F have a third child.

Draw a genetic diagram to show the genotypes of E and F, the gametes they produce and the possible genotypes and phenotypes of the offspring.

(3)

(c) The gene for cystic fibrosis affects many different body systems including the digestive system and the reproductive system.

(i) The mucus that is produced in the pancreas is much thicker and blocks the pancreatic duct.

Explain the effects this would have on human digestion.

(3)

.....

.....

.....

.....

.....

.....

.....

(ii) Cystic fibrosis can result in the production of thick mucus which builds up in the cervix.

Explain the effect this will have on reproduction.

(2)

.....

.....

.....

.....

.....

(Total for Question 8 = 12 marks)



9 Students investigate the effect of mineral ions on plant growth.

They use four solutions A, B, C and D.

- A is a complete mineral solution that contains all of the mineral ions that a plant needs to grow normally
- B is a complete mineral solution without nitrate ions
- C is a complete mineral solution without magnesium ions
- D is a complete mineral solution without iron ions

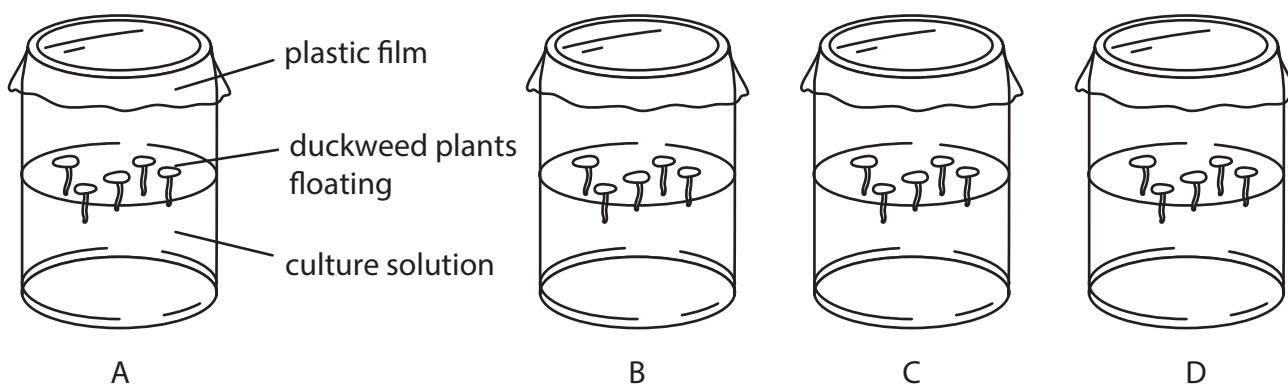
The plant they use is duckweed, which grows on the surface of water.



Duckweed plant with one leaf

This is the students' method.

- place each of the four solutions (A, B, C and D) into separate jars
- float five plants of duckweed in each jar
- use plants with the same number of leaves, are the same size and are healthy
- cover each jar with plastic film



- put the jars containing the plants in sunlight
- after four weeks count the total number of leaves in each jar
- make a note of the size and colour of the leaves in each jar

(a) (i) State two variables the students kept constant in their experiment.

(2)

1

2



(ii) Explain why the students used complete mineral solution rather than distilled water to compare the effects of lacking a mineral ion.

(2)

.....

.....

.....

.....

.....

.....

(iii) Explain why the jars are kept in sunlight.

(2)

.....

.....

.....

.....

(iv) State the independent variable in this investigation.

(1)

.....

DO NOT WRITE IN THIS AREA

DO NOT WRITE IN THIS AREA

DO NOT WRITE IN THIS AREA



(b) The students record the total number of leaves in each jar.

They classify the leaf size as large, medium and small.

They record leaf colour as how green the leaves were between 0 for white to 5 for dark green.

The students' results are shown in the table.

Solution	Mineral lacking	Total number of leaves	Leaf size	Leaf colour
A	none	13	large	4
B	nitrate	7	small	2
C	magnesium	8	medium	2
D	iron	9	medium	1

(i) Some of the observations such as number of leaves are quantitative and some such as leaf size are qualitative.

Give the difference between quantitative and qualitative results.

(1)

.....

.....

.....



DO NOT WRITE IN THIS AREA

DO NOT WRITE IN THIS AREA

DO NOT WRITE IN THIS AREA

BLANK PAGE



P 7 5 8 1 3 A 0 3 1 3 2

DO NOT WRITE IN THIS AREA

DO NOT WRITE IN THIS AREA

DO NOT WRITE IN THIS AREA

smartstudycampus.com

BLANK PAGE

